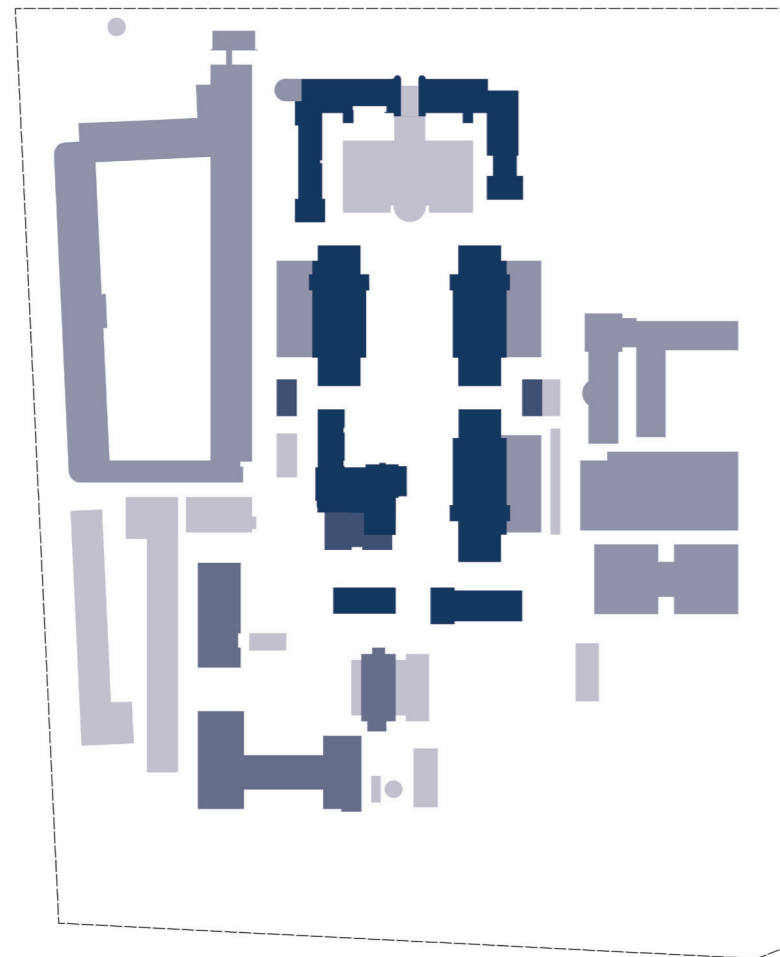


Willemskwartier Tilburg

Synchroon
BPD
Karres en Brands
DAT
Studio Architectuur MAKEN
Tarra architectuur & stedenbouw
Bruins Koopman architecten bv
Gls architectuur | interieur

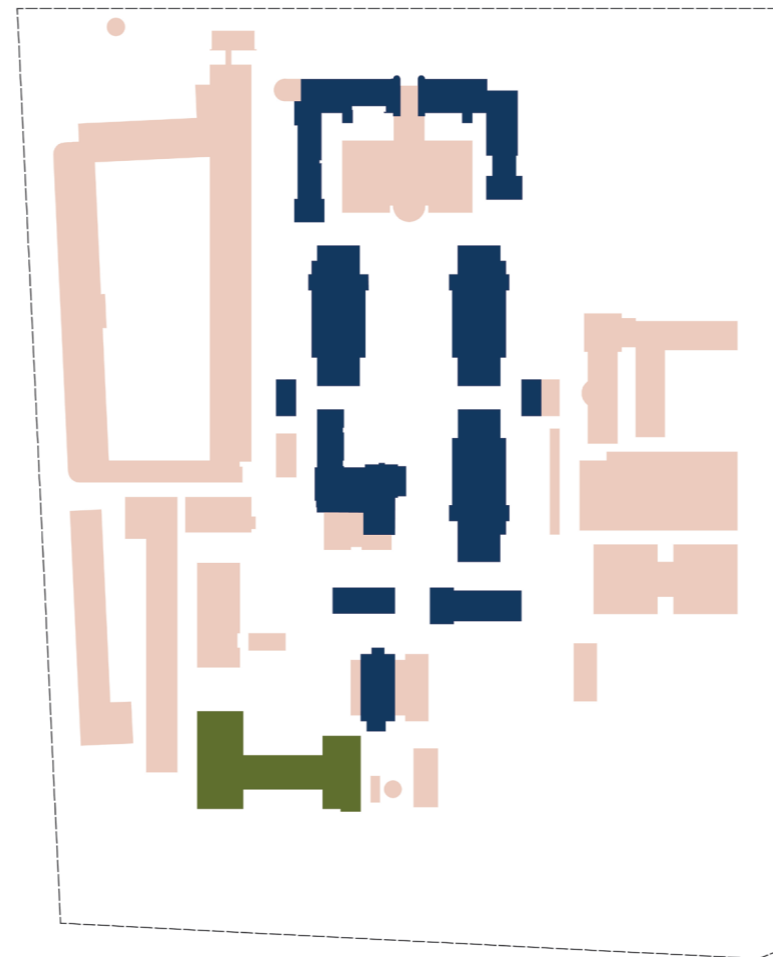
Omgang met bestaande en cultuurhistorische waarden

Bestaand: bouwtijden



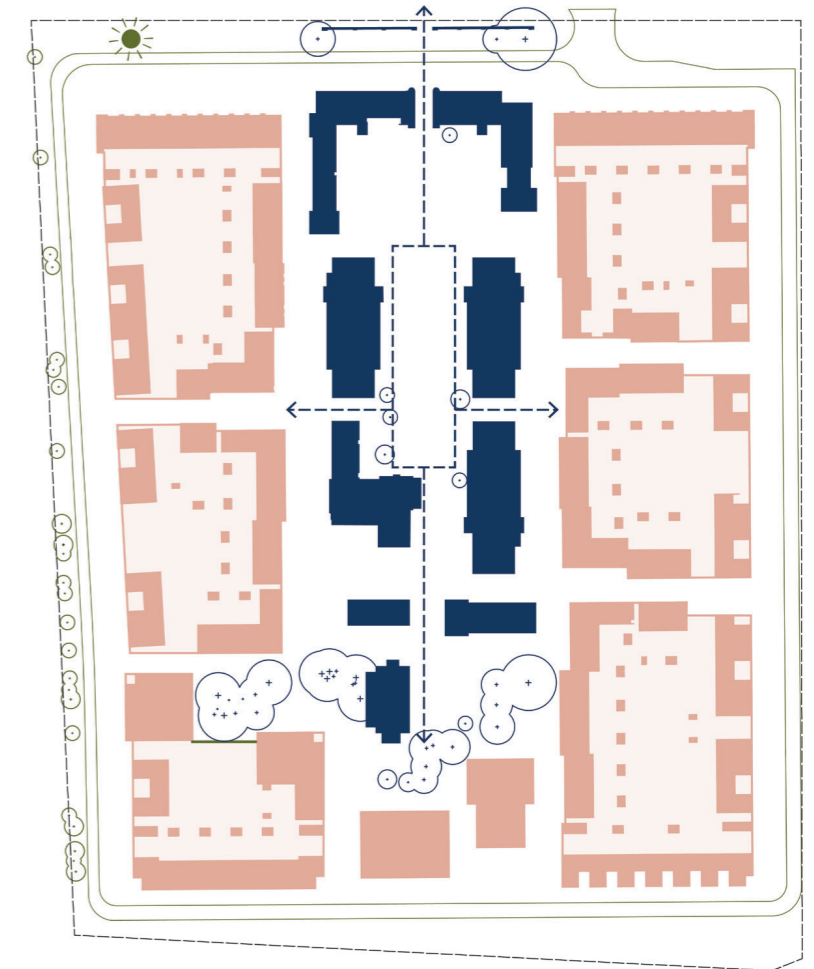
- 1938
- 1950-1960
- 1960-1985
- 1993-1997
- 2000-2017

Bestaand: waardestelling



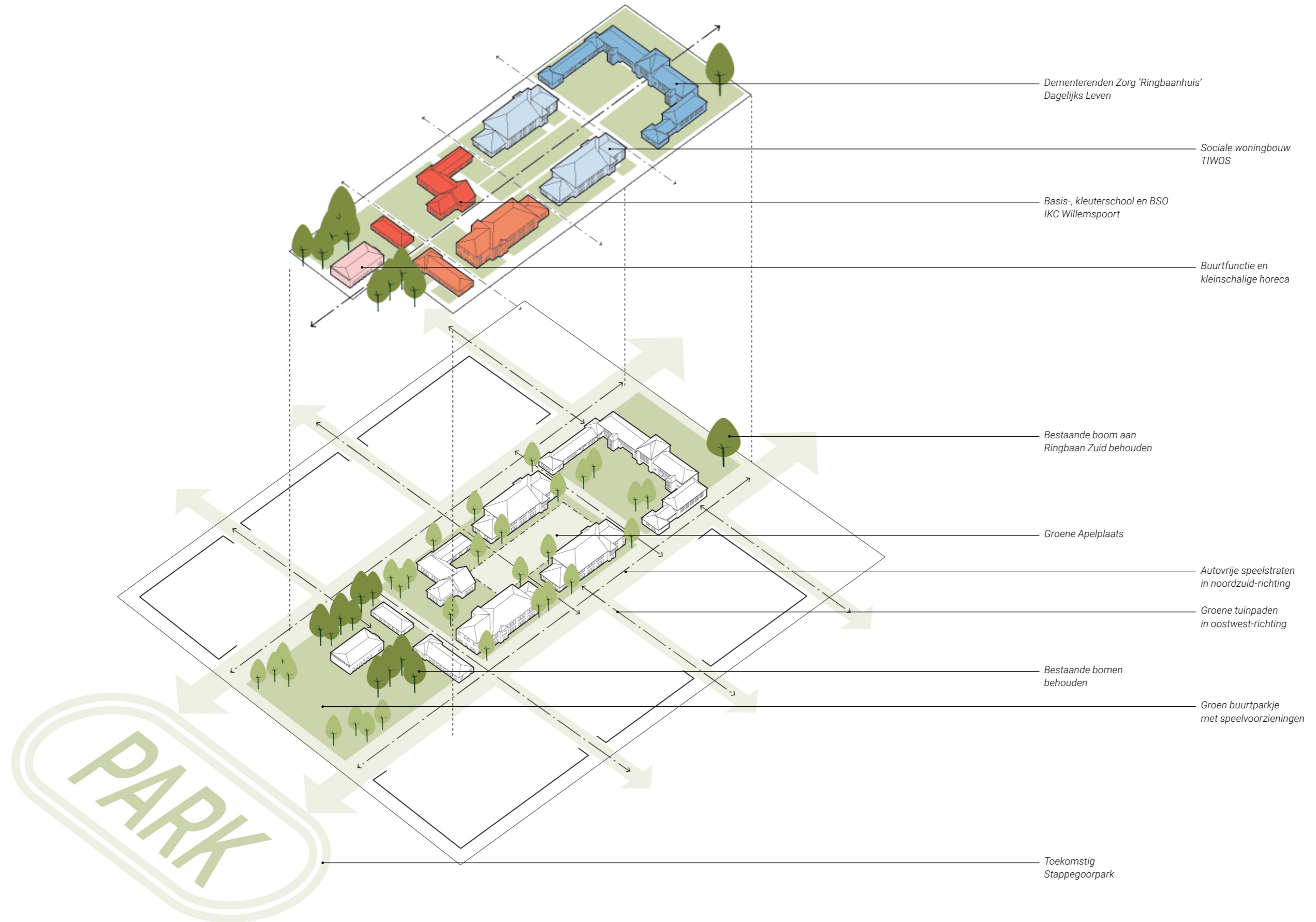
- Hoge waarde
- Positieve waarde
- Indifferente waarde

Ontwerp: herbestemmig, hergebruik en ontwikkeling



- Behouden kazernesgebouwen
- Re-use elementen
- Nieuwbouw
- Behouden bomen
- Verplanten bomen

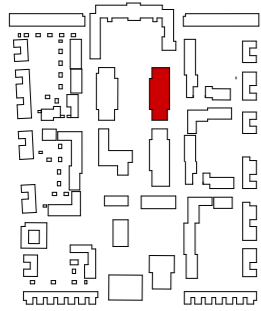
Principes Kazerne ensemble



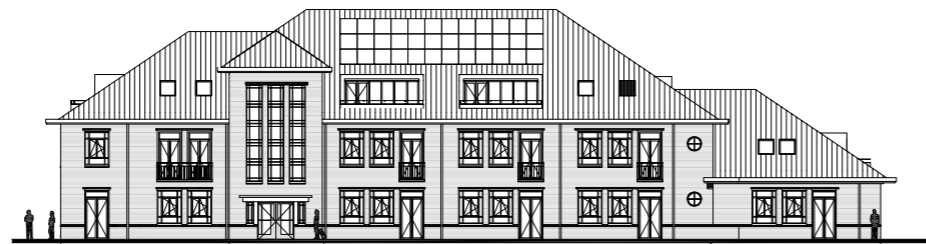
Plankaart



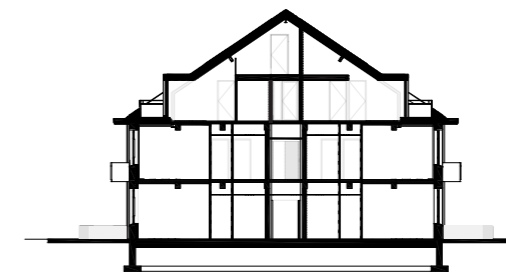
Kazerne Gebouw B - plattegronden, doorsnedes en gevelprincipes Appartementen



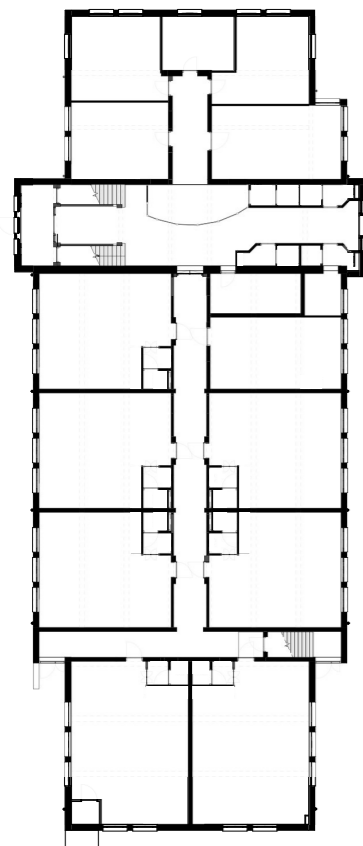
axo tuindeuren



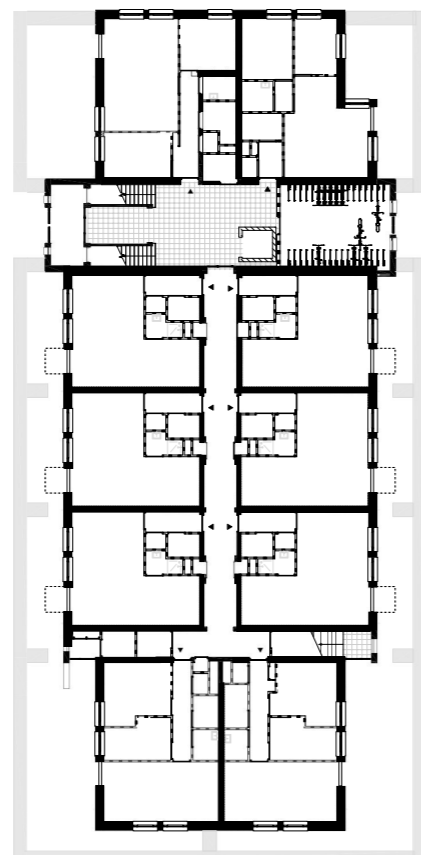
aanzicht



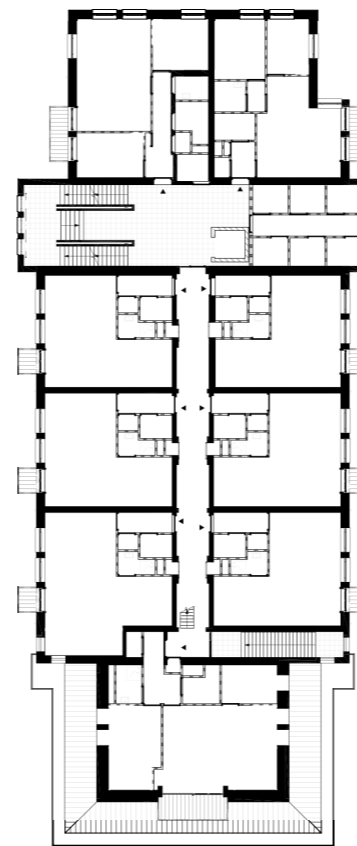
doorsnede



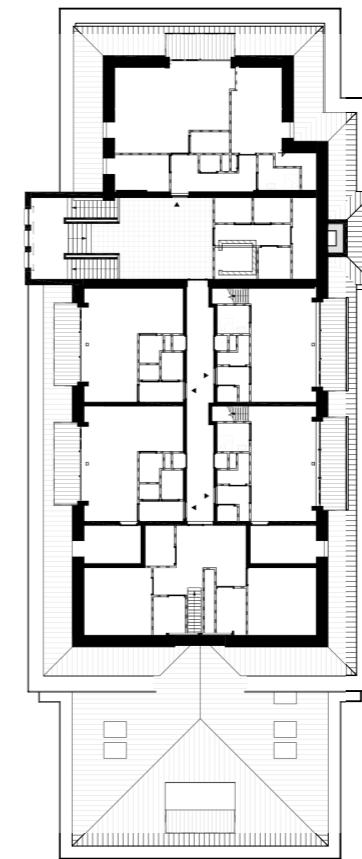
begane grond - oorspronkelijk



begane grond

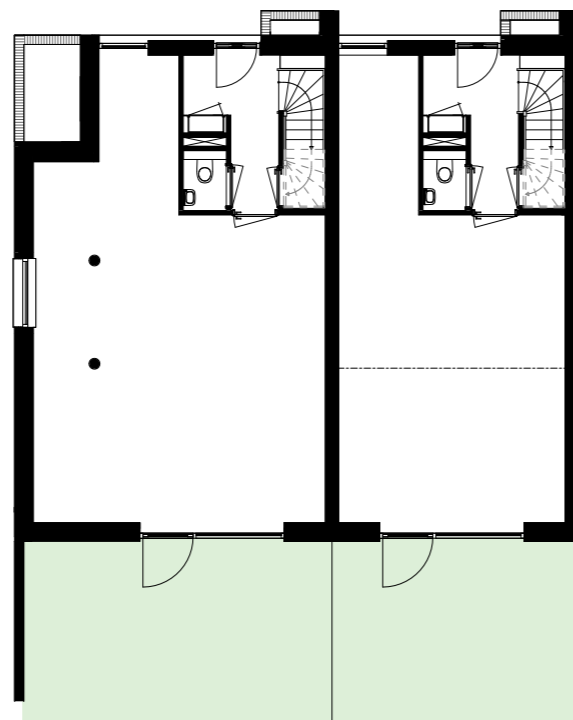
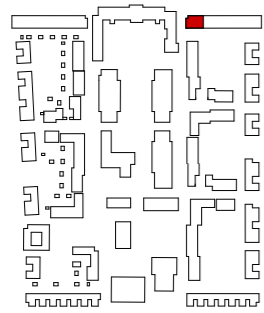


1e verdieping

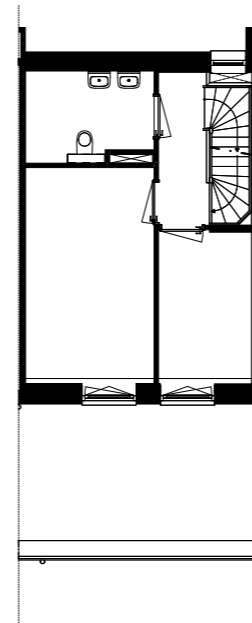


2e verdieping

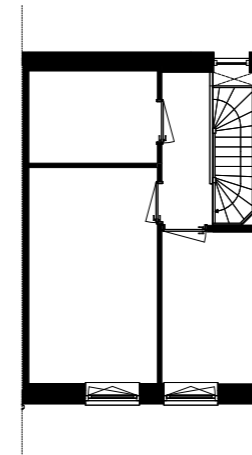
Typerende woningplattegronden en doorsnedes - Noordrand



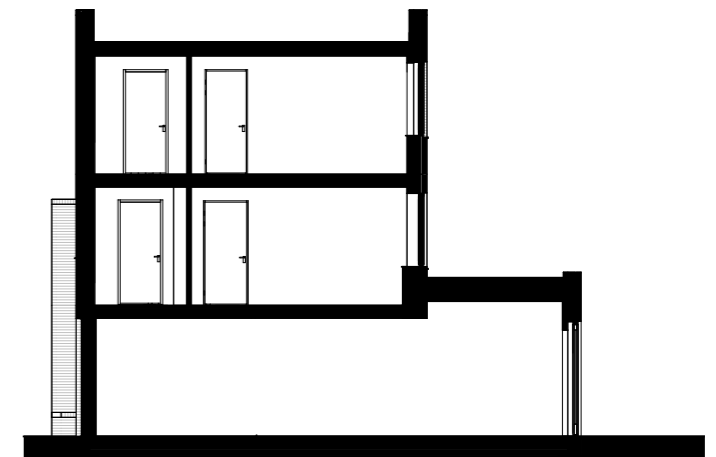
begane grond



1e verdieping

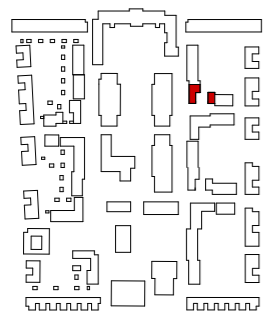


2e verdieping

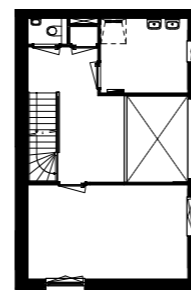


doorsnede

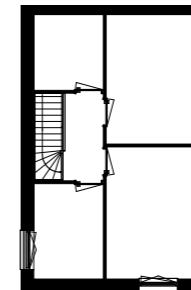
Typerende woningplattegronden en doorsnedes - combinatie van Hoekwoningen



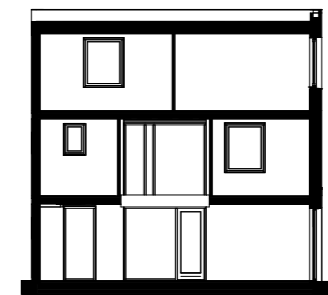
begane grond



1e verdieping

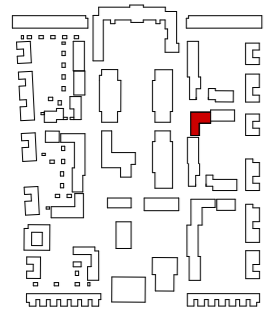


2e verdieping

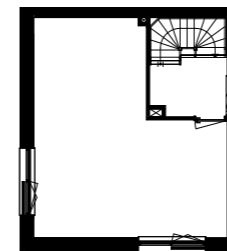


doorsnede

Typerende woningplattegronden en doorsnedes - Patiowoning



begane grond

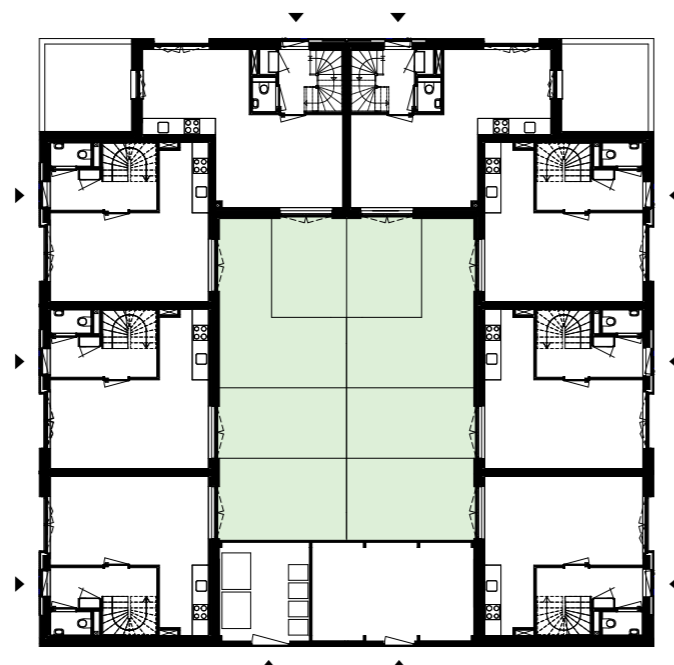
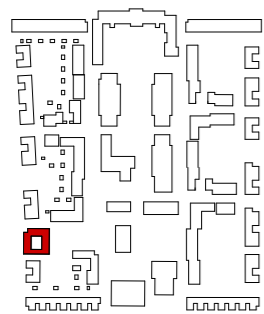


1e verdieping

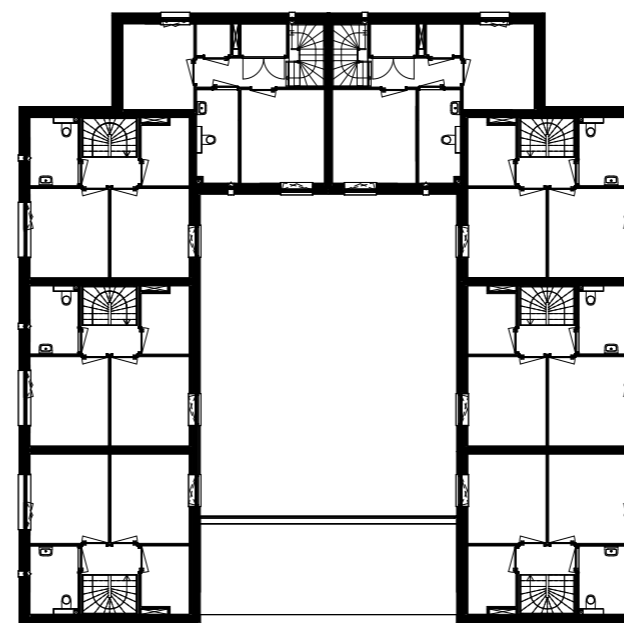


doorsnede

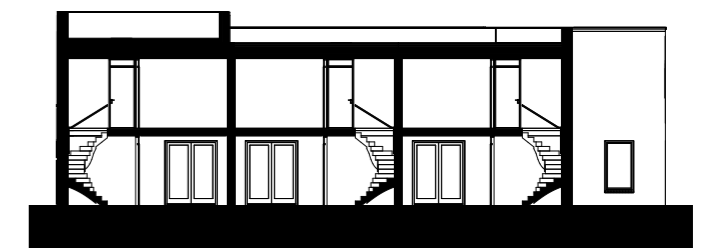
Typerende woningplattegronden en doorsnedes - Sociale huurappartementen



begane grond



verdieping



doorsnede